

May 25-28, 2012  
Memorial Day weekend

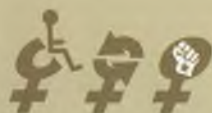
# WisCon 36

Concourse Hotel • Madison Wisconsin



Guests of Honor

**Debbie Notkin**  
**Andrea Hairston**



## ***A message from the Program Committee***

It's that fabulous time of the year when we ask you to envision WisCon 36. Why? Because our programming is built around the ideas you submit. You hold the power to create WisCon. What do you want your feminist science fiction/fantasy conference to look like?

What's the latest social media discussion about cultural appropriation? What's your definition of feminism? Remember that great panel you thought of at last year's WisCon? Now's the time to tell us all about it. Even if this is your first WisCon, we welcome your ideas. Tell us what you want your WisCon 36 to be. Go to [www.wiscon.info](http://www.wiscon.info) and click on the program idea submission form, and make sure to submit your ideas before the deadline of January 28.

As you can see from this brochure, WisCon volunteers are busy working to make Memorial Day the most amazing weekend you'll ever spend with like-minded geeks discussing feminist science fiction and fantasy. We welcome volunteers. One of the most enjoyable ways to experience WisCon is through volunteering.

Stay up to date on the latest WisCon updates by subscribing to eCube, our electronic newsletter, at [wiscon.info/news.php](http://wiscon.info/news.php)

We want your energy, your passion. We want to hear your voice... your programming ideas, your participation as a panelist, your artwork, excerpts from your latest work-in-progress and/or your questions and comments from the audience. Please join us!

—Joanna Lowenstein

## ***Call for Donations and Nominations to Scholarship Fund!***

Last year, the scholarship funds helped eleven people to come to WisCon. We'd love to help even more people this year. WisCon is currently working on a budget and will allot some money for this purpose. Please consider contributing to the scholarship fund this year. All contributions should be made to SF<sup>3</sup> with a note saying to which fund you wish to contribute. SF<sup>3</sup> is a 501.3 organization, so your donations are tax deductible. Every penny will be used to help potential WisCon members attend in May.

We are also accepting nominations for potential recipients of scholarships. Nominate someone else or nomi-

nate yourself. Tell us why the potential recipient would be a good person to attend WisCon and give us an idea of what funds would be needed—do you need help with membership, travel, and/or hotel? We will help as many people as we can.

All nominations for scholarships need to be made by midnight, PST, February 29, 2012. Scholarship recipients will be notified of their scholarship by March 31, 2012. Nominations for the scholarship fund should be sent to [scholarships36@wiscon.info](mailto:scholarships36@wiscon.info).

Nominate away! And please, if you have a little money to help other people come to WisCon, donate!

## ***Send us your memories of WisCon 35***

Please send us your highlights from WisCon 35 for the next souvenir book. Send us anecdotes of WisCon 35 Guest of Honor, Nisi Shawl so we can all appreciate her incredible talents. Please email memories to: [souvenirbook36@wiscon.info](mailto:souvenirbook36@wiscon.info)





## What happens when

All events take place at the Concourse Hotel unless noted

### All weekend

**Registration** 7–11 PM Thur  
9:30 AM–11 PM Fri  
9:30 AM–9 PM Sat  
9:30 AM–5 PM Sun  
9:30 AM–2 PM Mon

### Programming

1 PM Fri–1 AM Sat  
8:30 AM Sat–1 AM Sun  
8:30 AM Sun–1 AM Mon  
8:30 AM–4 PM Mon

### Lunch Breaks

11:30 AM–1 PM Fri–Sun

### Dinner Breaks

5:30–7:30 PM Fri–Sun

### Art Show

6–7:30 PM Fri  
9:30 AM–6 PM Sat  
10 AM–6 PM Sun  
10 AM–1 PM Mon

### Dealers' Room

2–7 PM Fri  
10 AM–6 PM Sat & Sun  
10 AM–1 PM Mon

### Thursday

6:30 PM  
A Room of One's Own  
Bookstore Reception  
307 W. Johnson St.

### Friday

9–11:30 AM  
Writers' Workshop  
(followed by lunch)

9 AM–1 PM  
Gathering set-up

11 AM–2 PM  
Dealers' Room set-up

Noon–5 PM  
Art Show set-up

1–4:00 PM  
The Gathering

7:30–8 PM  
Opening Ceremonies

### Saturday

11:30 AM–5 PM  
Tiptree Bakesale  
7:30–10:30 PM  
Tiptree Auction

### Sunday

7:30–8:30 PM  
Dessert Salon  
8:30–10 PM  
GoH Speech &  
Tiptree Award Ceremony

### Monday

11:30 AM–12:45 PM  
SignOut  
4 PM–?  
Dead Dog Party

## Programming

Programming is at the heart of WisCon. Each year, our members help determine WisCon's focus and shape. You create the experience, starting with the programming ideas. Even if it's your first time at WisCon, you, as a member, can submit ideas for the programming you'd like to see. What do you want us to debate? What do you want to learn? Just go to [www.wiscon.info/programming.php](http://www.wiscon.info/programming.php) and click on the link to the program idea submission form. The form will walk you through the steps.

Don't forget, you can also submit events for The Gathering. And we issue a special welcome to academics presenting on topics of interest to WisCon. We offer a unique venue to present a paper or thesis. You'll have an audience of geeks eager to listen, debate and learn.

Most programming is in a panel format with 3 to 5 panelists and a moderator. It's a format that works for many topics. However, we welcome new formats. For example, *Not Another &%%\$\* Race Panel*, featuring a game show format, has been a hit since WisCon 33. Formats that provide for more audience participation are always popular. We love to participate. In fact, it can be difficult to keep us quiet.

Your last day to submit programming ideas is January 28, 2012. The Programming Committee then gets busy "idea wrangling," polishing everything up a bit, consolidating duplicate ideas and so on. Then we open the program up to our members to review and take the opportunity to sign up as a participant. Yes, our members do it all. Even if it's your first time, you can volunteer to moderate or to serve as a panelist (or a game show host). We're planning to have programming participant sign-up open by February 22, 2012.

What's new for WisCon programming? At WisCon 36, we started adding Twitter hashtags to online program descriptions to help organize livetweeting; for WisCon 36, our programming team will start laying the groundwork to implement an on-line "tagging" or labeling system that will allow you to search through programming to your heart's content.

If you have questions, ideas, or comments, please feel free to e-mail [program36@wiscon.info](mailto:program36@wiscon.info), which will go to Joanna Lowenstein, your programming chair.



## Andrea Hairston

W

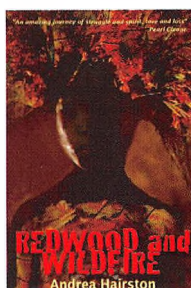
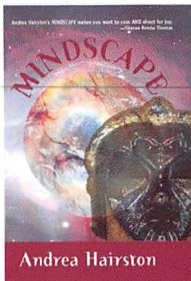


Andrea Hairston is the author of the speculative fiction novel *Mindscape*, which won the Carl Brandon Parallax Award in 2010 and was shortlisted for both the James Tiptree Award and the Phillip K. Dick Award in 2007. Her latest novel, *Redwood and Wildfire*, was listed as a *Locus* New and Notable book in May 2011. Both are published and available through Aqueduct Press. She is a graduate of Clarion West in 1999.

Currently, Andrea serves as Louise Wolff Kahn 1931 Professor of Theatre at Smith College in Northampton, Massachusetts. She teaches playwriting, African, African American, and

Caribbean theatre literature. She is also the Artistic Director of Chrysalis Theatre, creating original productions with music, dance and masks. Her plays incorporate science fiction themes. "The future is a metaphor...it's used to meditate on who we are and who we want to be." Her science fiction theater jam, "Archangels of Funk" received the 2003 Massachusetts Cultural Council Fellowship.

Andrea has translated plays from German to English and wishes that everyone gets a chance to travel and meet people on their own terms. "I felt I had to work on that as an artist, to try to show what dealing with differences does to us, what possible ways we can do it, and how we can, perhaps, do it better."



## Debbie Notkin



Elisabeth Vonarburg

photo by Elisabeth Vonarburg

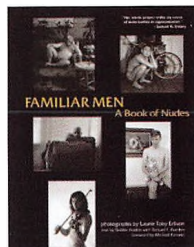
Debbie got into fandom by accident. She was playing a pick-up bridge game in a campus student center 3,000 miles from her home, and got to talking books with one of the guys at the table. Before she knew it, she was dating him (Tom Whitmore) and volunteering at the 1973 WorldCon in Toronto.

She got into professional bookselling by accident. She and Tom Whitmore and Dave Nee thought it would be fun to bring a box of books to the local fannish gathering every week for sale. They called themselves "The Portable Bookstore." Sherry Gottlieb at A Change of Hobbit in L.A. lured them from there into opening a storefront in Berkeley. She worked there for 27 years.

She got into professional editing by accident. She was working innocently at Other Change of Hobbit when the phone rang. It was Beth Meacham who invited her to move to New York and edit for Tor. She worked at Tor in New York for almost two years, and continued as a consulting editor for several more.

She got into the Tiptree Award by accident. Pat Murphy called her up one night and said, "Karen and I just founded this award, and we think you should be the first chair of the panel of judges. Twenty-one years later, she's the chair of the Tiptree Award motherboard.

She got into WisCon by getting involved in the Tiptree Award. Jim Hudson and Ellen Franklin donated frequent flyer miles and promised she wouldn't have to be out in the snow much. The next year, WisCon moved to Memorial Day weekend, so her excuse of not wanting to buy snow boots was gone—which was fine, because she was hooked anyway. She hasn't missed a WisCon since.





## Writers' Workshop

The Writers' Workshop is a unique part of the WisCon weekend that focuses on the needs of novelists, short story writers, and poets. We invite established professional writers, editors, and agents to lead small critique groups at the con. To participate, you must first register for the con, then submit a manuscript for critique to [workshop36@wiscon.info](mailto:workshop36@wiscon.info) by April 6th. You will then be matched to a pro and group after all manuscripts are received.

Complete submission guidelines are available on the Wiscon web site at [www.wiscon.info/respite.php](http://www.wiscon.info/respite.php). The preliminary list of pros will be published on the web site by February.

Please note that the workshop starts bright and early on Friday morning, so please make travel plans accordingly! For more details, contact us at [workshop36@wiscon.info](mailto:workshop36@wiscon.info).

This year, we are also considering a young writers' workshop session. If you are a teen writer and are interested in a workshop session geared specifically for you and your readers, please contact us at [workshop36@wiscon.info](mailto:workshop36@wiscon.info) so we can figure out the best way to set this up.

## The Gathering

The Gathering takes place on Friday from 1–4 p.m., just as most attendees are arriving in Madison. Join us for some free activities and refreshments (as long as they last). Find your old friends, and meet some new ones!

Please write to [gathering36@wiscon.info](mailto:gathering36@wiscon.info) with any offers to host activities.

## SignOut

### Book Signings

**11:30 AM–12:45 PM Monday**

Plan your travel well: come to the grand SignOut party to meet the authors, illustrators, cartographers, etc.! After discovering new authors and books (and buying stuff in the Dealers' Room), bring those books to SignOut for signing. It's also a fine time to sign friends' pocket program books and share goodbye hugs. Note: For the many fans of our Guests of Honor, Andrea Hairston and Deb Notkin, WisCon will also have other, earlier signing opportunities. For more information, contact [signout36@wiscon.info](mailto:signout36@wiscon.info).

## Academic Programming

The WisCon academic track has a long history of welcoming work from academics, independent researchers, and scholarly-minded fans. We're looking for presentations of focused, in-depth research on feminist science fiction, fantasy, and fandom, along with any other topics of interest to the WisCon community. Over the years, people have presented papers on fantasy, horror, and science fiction literature, media, and fandom. They have examined issues of feminism, gender, sexuality, race, and class, among many others.

You don't need to think of yourself as an academic to be interested in the academic track—the work presented here is often the result of intensive research, and it springs from genuine love and appreciation of genre fiction and its communities. Consequently, its presenters are passionate about communicating their work with an audience that will really appreciate the significance of their chosen topic—and also about avoiding the worst excesses of academic jargon. They come to be challenged and informed by their audience, too. First-time presenters almost invariably comment that they have learned more from the WisCon audience than they have from any other audience they've shared their work with. Do help us continue this tradition.

The deadline for submitting ideas to the academic track for WisCon 36 is Friday, February 17th, with decisions going out to participants by Monday, March 12th. Full instructions for the process can be found here: [www.wiscon.info/academic.php](http://www.wiscon.info/academic.php). We're also going to have a panel continuing last year's very successful conversation about the role of science fiction in teaching contexts. If you're a teacher (at any level—high school, college, writing workshops, adult education classes) and think you might be interested in this discussion, email [academic36@wiscon.info](mailto:academic36@wiscon.info) to let us know. Academic programming works in parallel with the rest of programming, but we handle the idea submission process a little differently. If you have any questions about any part of the academic programming process, please email: [academic36@wiscon.info](mailto:academic36@wiscon.info)





## Readings

Authors at WisCon usually read in self-organized themed groups in 75-minute sessions of four to six readers. We also offer an open pool for people who do not wish to form their own groups. These authors will be randomly assigned to a group, and then asked to come up with a catchy title/theme. Each reading session will contain at least four readers but may have up to six; therefore each person will have only 10–15 minutes to prepare and read.

Every year, the number of people wishing to read exceeds available space. We will give priority to authors who are promoting a new publication (both for groups and individuals). The process is not first come, first serve, however; you must sign up within the designated time period. Watch the [Wiscon.info](http://Wiscon.info) website for dates.

How to sign up for readings

**Step 1:** Form a group of fellow writers to read selections that have a common theme, style, or premise.

**Step 2:** Decide if you would like to join “the pool” of individual readers and be assigned to a group.

**Step 3:** The most important step of all. Go to the “Readings” page under programming and follow the instructions on how to sign up. Each member of your group must sign up individually.

If you are not able to access the online instructions or have any other questions, please send an email to [readings36@wiscon.info](mailto:readings36@wiscon.info).

**Step 4:** Encourage people to come to hear you by letting them know when you’re going to read. Make posters, promise chocolate, or find another fabulous way to promote your reading.

## Art Show

The WisCon 36 Art Show and Tiptree Award Auction items will be displayed in the same room.

Artists, please register now for participation in the Art Show at [www.wiscon.info/artshow.php](http://www.wiscon.info/artshow.php). Artists must have completed the Application Process and have received an acceptance notice to enter art into the Art Show.

In order to include more new artists, we are requiring all artists to submit an application and photos of their work to the Art Show Staff by February 29. We will start sorting through the applications then and notify the applicants of their status on or about March 15.

The art show will be open to artists on Friday to hang the art and will open Friday evening for viewing only. Starting when we open on Saturday morning, if you want a piece you can buy it. Right then, no hassles. Just bring the “purchase” part of the tag to the Art Show desk and give them your money. The piece of art is then yours!

As much as possible, we’d like to keep the art on display until Sunday evening so everyone can see it, but if you’re at the convention for only a day, or you have to leave early, you can take your artwork with you when you go. So please come by any time during the convention, look at the art, and buy some.

Convention members will have the opportunity to vote on the Art Show awards again this year. WisCon 36’s Art Show will continue to focus on feminist art, art by women, and art by Midwestern artists.



## Universal Design: Disability Inclusion Services

WisCon welcomes members in all our physical & mental variety. Requests? Questions? [access36@wiscon.info](mailto:access36@wiscon.info)



**Deadlines:** Reserve a mini-fridge or wheelchair-accessible hotel room: Contact hotel immediately.

Reserve large-print or Braille pocket program: May

1st. Rent a manual wheelchair or electric scooter: April 15th.

**Known Barriers are:** ubiquitous fluorescent lighting; no sign language interpreters; no mics in smaller program rooms; no wheelchair-accessible public family restroom in hotel; Gathering and Dealers Room feature perfumes, incense, and decades of reading materials. No sign language interpreters and limited captioning.

### Access on-site

**Breathing:** smoke-free city; we request members avoid fragrance unless there is a risk to own health. **Mobility:** ADA-conforming hotel, no stairs required; manual wheelchair for short-term loan. **Fatigue:** Safety enables queue jumping/seat locating when needed. Hearing: center front seats for speechreaders; sound amplification in larger program rooms. **Reading:** electronic versions of con publications; large print/Braille pocket programs (reserve by May 1st). **Stress Management:** inventory of serene environments to manage sensory overload, including Quiet Place (brain/body oasis on 2nd floor).

## For WisCon's Younger Members

### Child Care

Child care is baby-sitting for little children—ages 0–6. It's available for the nominal charge of \$1 for children in the care of any registered WisCon members during daytime programming hours. Use baby-sitting as much or as little as you want. But you must contact WisCon by **April 30** and get your child's name on the child care list! WisCon hires professional child care staff, and we need to know the number and ages of children to expect. Contact: [childcare36@wiscon.info](mailto:childcare36@wiscon.info)

### Children's Programs

Children's Programs are for older children—ages 7–12 and teens. Children who are not yet 12 need to be signed in and out by a parent or responsible adult. Older children and teens can come and go without parents. This is a separate track of WisCon programming aimed especially at children. Expect craft activities, supervised swimming, story-telling, and games. We also plan to have some discussion groups and interaction for the teens.

### Teens

Teens are welcome to participate in children's programming, but we also have a separate room for more complicated activities, puzzles, gaming, videos, music, and video games. Teens will help develop the activity schedule for their room. The teen room will be open from 8:30–11 PM, as well as during the regular children's room hours. The teen room provides space for teens, and, except for the room moderators, is off-limits to both adults and younger children.

## Volunteers make WisCon go round

WisCon is an all-volunteer convention that depends on the efforts of individuals like you. There are many different volunteer opportunities available both before and during the convention. We're dedicated to helping everyone find a meaningful way to volunteer. Many of our positions are "no experience necessary" and some last as little as an hour or two. If you'd like a little more responsibility, let us know and we'll find something more challenging for you. For more information, contact [volunteers36@wiscon.info](mailto:volunteers36@wiscon.info).



## Hotel room special back by popular demand!

THE  
MADISON  
CONCOURSE  
HOTEL  
and Governor's Club



Inn on the Park  
Capital Square

Our Three-for-the-Price-of-Two hotel room special proved so popular at WisCon 35 that we are repeating it for WisCon 36. Just think—four people sharing a room could stay the weekend for just \$64 each (before tax)! Go to <http://wiscon.info/hotel.php> to find all the details. Offer is limited to the first twelve requesters, so don't delay!

There are still a few Governor's Club rooms available at this point, though we expend them to go fast!

As of the time of this writing, there are also rooms available on the Concourse level, although by the time this reaches you, the Concourse level may be full as well. Nightly room rates at the Concourse level are \$98/\$108/\$118/\$128 for one to four people. Go to <http://wiscon.info/hotel.php> to find the link to our room block at the Concourse to make, change, or cancel your reservation. To talk to a human being, call 800-366-8293 from within the US and Canada; outside the US, call 1-608-257-6000.

If our special convention block at the Concourse is full, you may still be able to get a room at their higher rack

rate. This year for the first time, the Concourse has made a commitment that they will automatically move higher-rate convention members into the discounted block any time a cancellation is made, on a first-come, first-served basis. This means that if you cancel an unneeded con-rate room, you will directly benefit another WisCon member who will receive a discounted room thanks to your forethought. The Concourse has a one-week cancellation policy in the event you cannot attend WisCon.

Our satellite hotel, The Inn on the Park, has plenty of room, and at only three short blocks from the Concourse, it's an easy stroll to the convention. The Inn on the Park has rates of \$124 for a room with one bed for one or two people, \$135 for a room with two beds for up to four people, and \$154 for a two-room suite with a wet bar. One free valet parking space per room is included in the rate. There is no extra charge for a refrigerator, but you must request one when making your reservation. For more information, call The Inn on the Park at 800-780-7235 (US and Canada) or 1-608-285-8000 for the rest of the world.

If you have any questions or concerns about your hotel room for WisCon 36, please email the Sleeping Rooms Coordinator at [rooms36@wiscon.info](mailto:rooms36@wiscon.info). We look forward to seeing you in May!

### Sustainability

In recent years we began working on making WisCon environmentally sustainable. We'll continue to make changes in the convention this year and to look for ways to continue improving in the future. We encourage everybody who attends WisCon to do the same. This is a continuing effort, as we try to balance the perfect with the practical, but we think it's an important one. If you have questions or ideas, or you're interested in helping, please email us at [carbon36@wiscon.info](mailto:carbon36@wiscon.info).

# WisCon

### The Essential eCube

Read breaking news about Tiptree winners and returning guests, get programming reminders, and receive information about the hotel as soon as we know about it. Subscribe to the electronic WisCon newsletter. We call it *eCube*, and it's absolutely free. To subscribe go to [www.wiscon.info/news.php](http://www.wiscon.info/news.php)

### Registration limited to 1,000

If you have not already done so, we strongly urge you to register for WisCon now! Registration will be capped at 1,000 attendees. The hotel (and the ConCom) simply cannot handle more. All program participants must register for WisCon in advance. NO at-the-door registration will be available after we have reached the 1,000-attendee limit.



The James Tiptree, Jr. Award is an annual literary prize for science fiction or fantasy that expands or explores our understanding of gender.

### 21st annual Tiptree Award ceremony

WisCon 36 will host the James Tiptree, Jr. Award ceremony, which directly follows the guest of honor speech on Sunday night. The winner (or winners) will be announced sometime before the convention in WisCon's electronic newsletter, *eCube*.

### Tiptree Bake Sale

**"World Domination through Bake Sales!"** That's still our slogan at Tiptree Juggernaut Headquarters. We want to make this year's bake sale bigger and better than ever (the proceeds all go to support the Tiptree Award), and we'll need your help!

You can help by baking or making delicious treats (especially special-diet items such as gluten-free or vegan), by donating an hour or two Saturday as a volunteer, or by purchasing items starting at 11:30 AM on Saturday, across from the consuite. Contact Tracey at [bakesale36@wiscon.info](mailto:bakesale36@wiscon.info) for further information or if you have any questions.



### Tiptree display & auction

You never know what's going to happen at the Tiptree Auction. You won't want to miss auctioneer Ellen Klages' latest hilarious performance. And be sure to check out Freddie Baer's new Tiptree Award T-shirts and publications available in the Art Show/Tiptree Display room.

Tiptree Auction items will be displayed at the Gathering on Friday afternoon, and then moved into the Art Show room. You may place bids during the Gathering or until the Art Show closes at 6 PM Saturday. Items with bids will be auctioned that evening. If we do not have time to auction off all the items that receive written bids, the remaining items will be available for direct purchase. Items that do not receive written bids will be stored for next year's auction.

If you would like to donate an item for the auction, please contact us as soon as possible at [auction36@wiscon.info](mailto:auction36@wiscon.info). We need your item in time for the Gathering, preferably between 9 AM–1 PM Friday. All proceeds from the auction go to the Tiptree Award.

### Free Party Suites

WisCon has party suites on the sixth floor available for the use of convention members. To request one, go to <http://www.wiscon.info/parties.php>. The deadline for requesting a party suite will be March 1, 2011.



## How to Register

There are two registration methods for WisCon 36. The first, and easiest, is to complete the online registration form at [www.wiscon.info](http://www.wiscon.info). You'll need to create your account before you register if you haven't done so already. You can then register and pay via PayPal or print out your registration receipt and mail it and your check to the address on the receipt. You can also decide whether you want to receive information about

specific areas, such as the art show, volunteering, or the bake sale.

If you prefer not to register online, you can use the form included in this mailing or download one from [www.wiscon.info](http://www.wiscon.info), print it, and mail it in. If you have questions or need to transfer your membership to WisCon 36 or request a refund, please email [registration36@wiscon.info](mailto:registration36@wiscon.info).

## Contact us

Academic Programming.....	<a href="mailto:academic36@wiscon.info">academic36@wiscon.info</a>	Programming.....	<a href="mailto:program36@wiscon.info">program36@wiscon.info</a>
Advertising .....	<a href="mailto:advertising36@wiscon.info">advertising36@wiscon.info</a>	Readings .....	<a href="mailto:readings36@wiscon.info">readings36@wiscon.info</a>
Art Show .....	<a href="mailto:artshow36@wiscon.info">artshow36@wiscon.info</a>	Registration .....	<a href="mailto:registration36@wiscon.info">registration36@wiscon.info</a>
Childcare .....	<a href="mailto:childcare36@wiscon.info">childcare36@wiscon.info</a>	Scholarships.....	<a href="mailto:scholarships36@wiscon.info">scholarships36@wiscon.info</a>
Dealers Room.....	<a href="mailto:dealers36@wiscon.info">dealers36@wiscon.info</a>	SignOut.....	<a href="mailto:signout36@wiscon.info">signout36@wiscon.info</a>
Disability Inclusion Services .....	<a href="mailto:access36@wiscon.info">access36@wiscon.info</a>	Souvenir Book.....	<a href="mailto:souvenirbook36@wiscon.info">souvenirbook36@wiscon.info</a>
Freebie Table Items .....	<a href="mailto:freebietable36@wiscon.info">freebietable36@wiscon.info</a>	Tiptree Bakesale.....	<a href="mailto:bakesale36@wiscon.info">bakesale36@wiscon.info</a>
The Gathering .....	<a href="mailto:gathering36@wiscon.info">gathering36@wiscon.info</a>	Tiptree Auction .....	<a href="mailto:auktion36@wiscon.info">auktion36@wiscon.info</a>
Guest of Honor Nominations .....	<a href="mailto:gohnom36@wiscon.info">gohnom36@wiscon.info</a>	Treasurer .....	<a href="mailto:payment36@wiscon.info">payment36@wiscon.info</a>
Hotels and Hotel Rooms.....	<a href="mailto:rooms36@wiscon.info">rooms36@wiscon.info</a>	Volunteers.....	<a href="mailto:volunteers36@wiscon.info">volunteers36@wiscon.info</a>
Logistics .....	<a href="mailto:logistics36@wiscon.info">logistics36@wiscon.info</a>	Web Page.....	<a href="mailto:web36@wiscon.info">web36@wiscon.info</a>
Newsletter (At-Con) .....	<a href="mailto:newsletter36@wiscon.info">newsletter36@wiscon.info</a>	Writers' Workshop .....	<a href="mailto:workshop36@wiscon.info">workshop36@wiscon.info</a>
Parties.....	<a href="mailto:parties36@wiscon.info">parties36@wiscon.info</a>	Not sure who? .....	<a href="mailto:concom36@wiscon.info">concom36@wiscon.info</a>

## Decoding Your Mailing Label

If you are already registered, you will find a letter on your mailing label showing your registration status. You can also always check your registration status at [www.wiscon.info](http://www.wiscon.info). Just log in and you should see it. The letter codes are all about your registration:

- |          |   |           |  |
|----------|---|-----------|--|
| <b>A</b> | You're an attending (Adult) member of WisCon 36 | <b>T</b>  | You're a teen member of WisCon 36                              |
| <b>G</b> | You're one of our guests of honor               | <b>C</b>  | You're a child member of WisCon 36                             |
| <b>P</b> | You're a past guest of honor                    | <b>S</b>  | You're a supporting member who will not attend WisCon 36       |
| <b>Y</b> | You're a youth member of WisCon 36              | <b>D#</b> | (D1, D2, D3, etc.) You've purchased that many dessert tickets. |

# WisCon 36 Registration Form

If registrants have different postal addresses, please copy this form and complete separate registrations.

Name person #1		Name person #2
Convention Name person #1		Convention Name* person #2
Email Address person #1		Email Address person #2
Street address		* <b>Optional convention names.</b> Normally we print your first and last names on your badge and use that name in the program if you are a program participant. If you have a special name or "handle" you prefer to use instead, please write it in the "convention name" field. We can accept only standard alphabetic characters.
City		Name person #3
State or Province	Country	Convention Name* person #3
Zip or Postal code		Email Address person #3

Person #1	Person #2	Person #3	Please fill in the correct amount for each attending person listed above.
\$	\$	\$	<b>Adult</b> (age 18 & up): \$50
\$	\$	\$	<b>Teen</b> (age 13-17): \$20
\$	\$	\$	<b>Youth</b> (age 7-12): \$20
\$	\$	\$	<b>Supporting</b> (non-attending, receive publications only): \$15
\$ 0.00	\$ 0.00	\$ 0.00	<b>Former WisCon guests of honor</b> free
\$	\$	\$	<b>Dessert Salon Tickets:</b> \$15 each
\$	\$	\$	<b>Childcare</b> (age 0-6): Donation, or minimum price of \$1. Must sign up by April 30. Indicate child's age as of WisCon 36.
<input type="text"/> yrs old	<input type="text"/> yrs old	<input type="text"/> yrs old	

\$ \_\_\_\_\_ Total amount  
 \$ \_\_\_\_\_ Tax-deductible donation  
 \$ \_\_\_\_\_ Total payment



Mail before May 15 to:  
**WisCon 36**, PO Box 1624  
 Madison, WI 53701-1624  
 Please make checks payable to **WisCon**

**No registrations accepted May 1-26. Registration will be cut off at 1,000 attendees.**

We do **not** guarantee availability of at-the-door registrations.

**Subscribe to eCube and receive email updates about WisCon.**

**Join the eCube mailing list at:**

[www.wiscon.info/news.php](http://www.wiscon.info/news.php)

**Check-offs and additional privacy options will be available soon at [www.wiscon.info](http://www.wiscon.info)**



**WisCom**

c/o SF<sup>3</sup>  
PO Box 1624  
Madison, WI 53701-1624

